

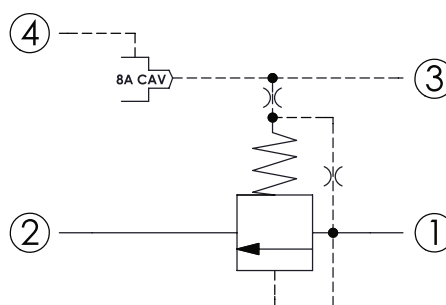
# CRV-23A - Relief valve

Ventable, pilot operated, balanced piston with external drain with integral 8A control cavity

## 1 Available versions

Ordering example:

|         |           |        |        |
|---------|-----------|--------|--------|
| CRV-23A | -40       | -D     | -8     |
| Type    | Operation | Spring | Cavity |



- 1 Inlet
- 2 Outlet
- 3 Vent
- 4 Drain

### Operation

| Coding | Description   |
|--------|---------------|
| 40     | Standard type |

### Spring

| Coding | Minimum control pressure (bar) |
|--------|--------------------------------|
| D      | 1.7 (25 psi)                   |
| W      | 7 (100 psi)                    |

#### **i** INFORMATION

W spring is suit for higher pressure drop application.

### Cavity

| Coding | Cavity |
|--------|--------|
| 8      | T-8A   |

#### **i** INFORMATION

- Applications: please refer to CRPA-8A-2D...-74, CPRB-8A-2D...

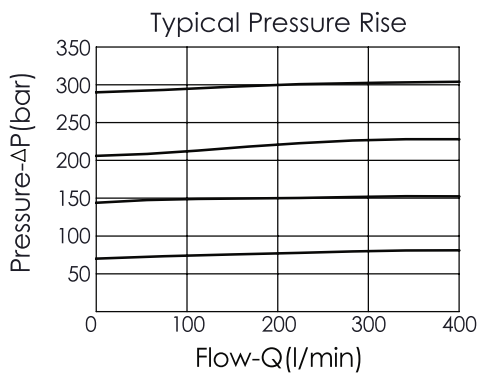
## 2 Technical data

|                               |              |
|-------------------------------|--------------|
| Operating pressure $p_{\max}$ | 350 bar      |
| Flow rate $Q_{\max}$          | 240 l/min    |
| Installation torque           | 200 - 215 Nm |
| Cavity                        | T-23A        |
| Weight                        | 0.63 kg      |

### **i** INFORMATION

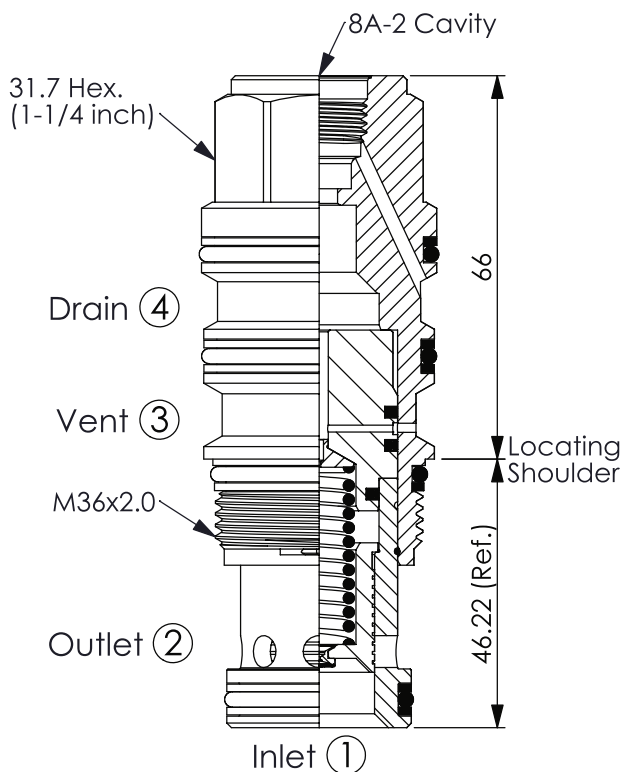
- Response time-typical (10 ms)
- Maximum leakage approximately (65 cm<sup>3</sup>/min/70 bar)
- Will accept maximum pressure at port **2**, suitable for use in cross port relief circuits. If used in cross port relief circuits, consider spool leakage.

### Characteristic lines



### 3 Dimensions

All dimensions in mm, subject to change.



### 4 Other information

see [Technical information HAWE cartridge valves: D 8219](#)

see [Recommendation for hydraulic fluid: D 5488/1](#)

